



SUNDARBAN SOCIAL DEVELOPMENT CENTRE

SUNDARBAN SOCIAL DEVELOPMENT CENTRE

# ANNUAL REPORT 2021-22



Village - Sultanpur  
P.O. - Krishnanagar  
District - South 24 Parganas  
West Bengal, India - 743345

[www.ssdcindia.org.in](http://www.ssdcindia.org.in)



+91 9433280774 / +91 9831654218



[ssdc@ssdcindia.org.in](mailto:ssdc@ssdcindia.org.in)





### **Mr. Bhakta Purkait - General Secretary**

In the last few years, we witnessed the most dreadful situation with the COVID-19 pandemic on one side and occurrences of severe Super Cyclones on the other. Millions of human lives were lost, while many lost their livelihoods. At SSDC, even at those grim moments, we stood aside the needy people and extended our support to them through increased vaccination against the COVID-19, by providing dry rations and safety kits. Still, without the support from all of you, we would not be able to do that. We want to thank all of you for your kind support to SSDC for over three decades.



*Bhaktapurkait*

### **Mr. Gopal Pramanik - President**

As a social development organisation, SSDC completed another year of dedicated social work to uplift the vulnerable, poor and marginalised sections of the district of South 24 Parganas, especially for the rural people of the inaccessible and remote islands of the Sundarbans. We are grateful to all who stood by our side during our eventful journey of 34 years since the inception of SSDC in 1989.





### Our Mission



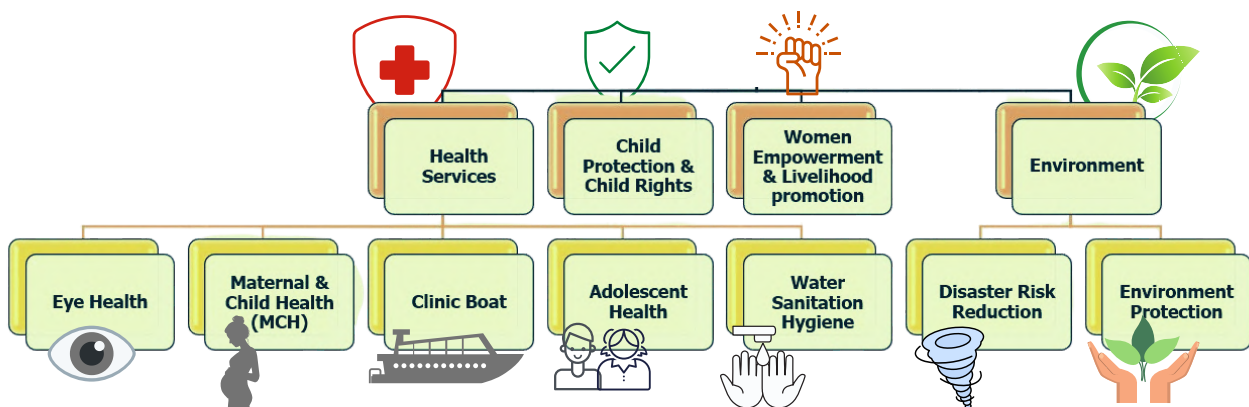
Uphold the human dignity of the poor and marginalized through the process of empowerment

### Our Vision



Build up a just society where love, peace and equality is discovered, lived and nurtured

### Our Area of Work





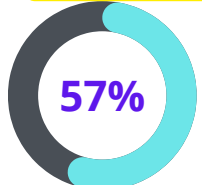
There is high demand of Cataract surgeries in South 24 Parganas district of West Bengal, especially in the Sundarbans region; the demanding poor people do not have that adequate financial condition to go for Cataract Surgery. SSDC Eye Hospital (recipient of **National Eye Award in 2007 & International Eye Health Hero Award in 2017**) has all the modern infrastructure with **2 Operation theaters and 21,000 sq. ft. of area** to provide improved quality eye care services and to meet the demand. SSDC has a functional **50 bedded modern eye hospital** at its head office, since the year 2002 and **17 vision centres across the whole district of South 24 Parganas**. In hospital, we provide **quality services** at a subsidized rate to eye patients through **modern instruments, patient friendly infrastructure, qualified and experienced doctors and medical staffs**. Keeping Sundarban's perspective in mind, where communication is a huge barrier, we also have **dedicated transport facilities for the patients** who stay at remote parts of distant island areas. Our 17 vision centres are situated at different locations across the South 24 Parganas district of West Bengal to provide doorstep services to the marginalized community and generate awareness on eye health care, provide basic eye check-up and screening and referral to eye hospital as per need.



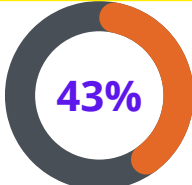
 **EYE HEALTH (CONTD.)**

**5801**

**CATARACT SURGERIES**



Free Surgery

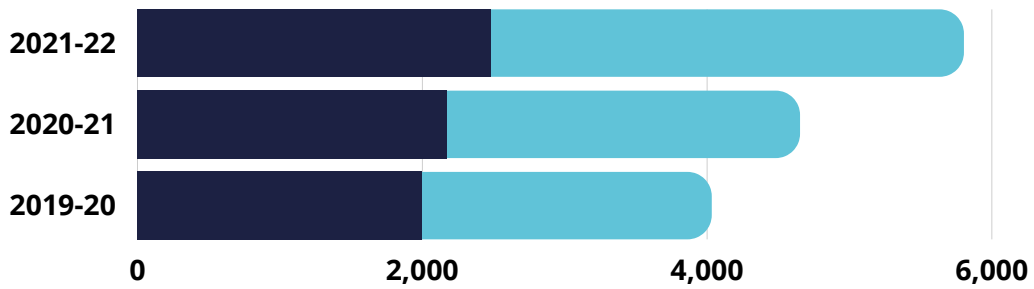


Paying Surgery



**LAST 3 YEARS' COMPARISON OF CATARACT SURGERIES**

■ Paying Surgeries ■ Free Surgeries



**64670**

Patients treated

Through  
OPD

Through  
Vision  
Centres

Through  
Eye Camps

**21474**

**13487**

**29709**





# CLINIC BOAT



NO. OF CLINIC BOATS CAMPS **66**

People access Clinic Boat services

2021-22  
**9201**

ANC, PNC women	Aged persons	Children	Adolescents	PWDs	Others
236	3248	1593	1091	34	2999

The **Clinic Boat** concept of SSDC is providing best health care in the remotest areas of Sundarbans islands. The Clinic Boat is adequately staffed and has diagnostic facilities. This clinic boat reaches out to more than 10000 beneficiaries in a year on an average and apart from providing basic health care (diagnosis and free medicine) to the vulnerable people of Sundarbans, it conducts awareness health camps with the help of ASHA workers to spread good health and hygiene practices. SSDC's Clinic Boat reaches to those inaccessible islands of the Sundarbans, where the government health service and infrastructure is inadequate because of the adverse geographical situation as well as due to the regular occurrences of natural disasters like flood, cyclone etc.

An aged woman came to access the Clinic Boat service on a wheelbarrow



A Pregnant woman boarding a boat to go back to her home at one of the islands of the Sundarbans after accessing the Clinic Boat service





Activity/ Services	Units	Numbers
Support to high-risk pregnant women for USG trough emergency referral by BMOH	PWs (High-risk)	525
Intervention Sub-center	Sub-Centre	16
Nutritional Counseled of PWs	women	1342
Services provided to post-natal mothers	PNs	689
Services provided to New-born babies	NBs	586
Services provided to Low weight birth babies	LBWs	67
Training provided to ANMs	ANM	64
Training provided to ASHAs	ASHA	158

- Drinking Water Point
- Hand Washing Station
- Bathroom Renovation work



At Jharkhali PHC

- Drinking Water Station
- Hand Washing Station
- Segregation Room
- Incinerator
- Bathroom Renovation work



At Ghutiari Sharif BPHC



# Child Protection & Child Rights



We have our prime concern for child protection from all types of deprivation, abuse, violence & other risk of vulnerability. Over 30000 children between age group of 0-18 years from Mandirbazar & Patharpratima block are directly intervened through integrated child development activities. Early marriage, Child Domestic Workers (CDW), trafficking, school dropout are the key issues that relatively brings target-oriented intervention carried out to all children in multi sectoral approach. The targeted villages fall under socio-

economically backward section and the resident population is at risk of issues like Child Marriage, Child Labour, Child Domestic Worker (CDW), violence related to dowry and child trafficking etc.

Prevention of 128 Child Marriage incidents



Successfully addressed 149 number of Child Labour incidents



Successfully addressed 23 number of Child trafficking incidents



64 number of Cases received from 1098



Mainstreamed 229 number of Drop out children



69 VLCPCs (Village level Child Protection Committee) are continuously being trained on child protection issues



2654 number of vulnerable households with children linked with social protection schemes





# DISASTER RISK REDUCTION



TOTAL  
16500

PERSONS RECEIVED  
• DRY RATION  
• HYGIENE KITS



TOTAL  
950

PERSONS RECEIVED  
COOKED FOOD AT 2  
COMMUNITY KITCHENS  
FOR 4 DAYS



## ENVIRONMENT PROTECTION

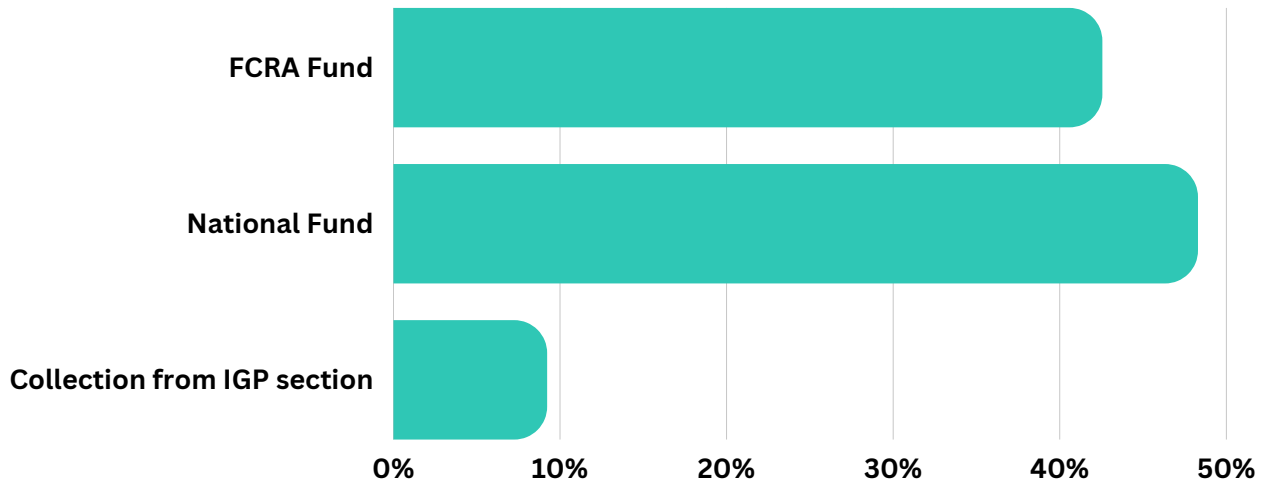


When we are losing thousands of acres of native vegetation to urbanization, it is important to plan greening with native plants to maximise the ecological benefits than just go after numbers. By planting native trees, we will plant species that are already adapted to the environment; they don't need any extra water or nutrients. Moreover, when we plant local trees, we will help local wildlife live and thrive. Animals like birds and butterflies have looked to native plants for years for food and shelter. When there aren't enough native trees around, these populations can quickly decline. That's why native trees are important—they help support our local ecosystems. **We have planted 1,30,000 number of native tree saplings** at different Gram Panchayats of the Mandirbazar block during 2021-22.

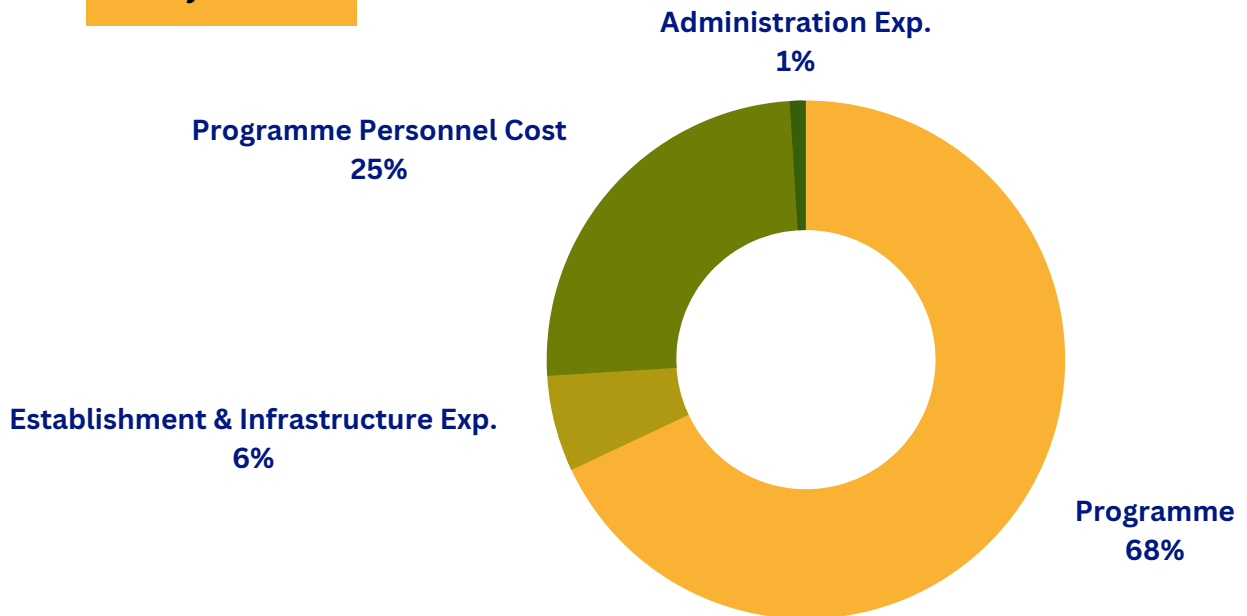
Summarised Receipts & Payments Account for the year 2021-2022

RECEIPTS	Amount	Amount	PAYMENT	Amount	Amount
Opening Balance		₹ 1,13,24,591.61			
<b>FCRA FUND</b>			<b>Programme</b>		₹ 7,81,94,930.12
Grant	₹ 5,17,33,947.00		Establishment & Infrastructure Exp.		₹ 76,50,774.00
Interest	₹ 2,91,416.00	₹ 5,20,25,363.00	Programme Personnel cost		₹ 2,86,23,361.00
<b>NATIONAL FUND</b>			Administration Exp.		₹ 9,69,556.10
Donation & Other collections	₹ 5,87,97,589.14				
Interest	₹ 2,54,957.00	₹ 5,90,52,546.14			
<b>COLLECTION FROM IGP SECTION</b>					
Sales Unit	₹ 1,12,13,146.22		<b>Closing Balance</b>		₹ 1,82,16,998.75
Interest	₹ 39,973.00	₹ 1,12,53,119.22			
		₹ 13,36,55,619.97			₹ 13,36,55,619.97

Sources of Receipt



Payments



ABRIDGED BALANCE SHEET ACCOUNTS AS AT 31.03.2022		
LIABILITIES		Amount
General fund/fund balance		₹ 7,41,71,760.75
<b>TOTAL</b>		<b>₹ 7,41,71,760.75</b>
ASSETS		Amount
<b>Fixed Assets</b>		₹ 5,12,30,711.00
<b>Investment</b>		₹ -
<b>Net Current Assets</b>		
Current Assets	₹ 2,62,26,147.75	
Less: Current Liabilities	₹ 32,85,098.00	₹ 2,29,41,049.75
<b>TOTAL</b>		<b>₹ 7,41,71,760.75</b>

ABRIDGED INCOME & EXPENDITURE FOR THE YEAR ENDED 31.03.2022	
Particulars	Amount
<b>EXPENDITURE</b>	
Expenditure on objects of the society	₹ 9,06,95,155.60
Depreciation	₹ 67,04,459.00
<b>Total</b>	<b>₹ 9,73,99,614.60</b>
<b>INCOME</b>	
Income from Local & IGP sources	₹ 5,66,19,597.74
Income from foreign sources	₹ 4,84,03,924.00
Interest from foreign sources	₹ 2,91,416.00
Interest from Local & IGP sources	₹ 2,94,930.00
Change in stock	₹ 8,71,112.00
<b>Total</b>	<b>₹ 10,64,80,979.74</b>
<b>Excess of Income over Expenditure</b>	<b>₹ 90,81,365.14</b>

## OUR PARTNERS

Ministry of Health & Family Welfare, Govt. of India & Govt. of West Bengal  
Ministry of Panchayat & Rural Development, Govt. of West Bengal  
The District Magistrate & all the Additional D.M.s of South 24 Parganas District  
The Sabhadhipati & all the Karmadhakshyas, South 24 Parganas Zilla Parishad  
CMOH, South 24 Parganas District & Diamond Harbour Health District  
Sabhapati, all the South 24 Parganas Panchayat Samities  
BDO, all the South 24 Parganas Block Development Offices  
BMOH, all the South 24 Parganas Block Primary Health Centres  
Pradhan & Panchayat members, all the South 24 Parganas Gram Panchayats  
Japan High Commission, Kolkata  
CBM  
Azim Premji Philanthropic Initiative  
ChildFund India  
ChildFund Germany  
Taj Public Service Welfare Trust  
Cognizant Foundation  
Bart Massart & PAZ, Belgium  
The Hans Foundation  
Volkart Foundation Indian Trust  
Sight Savers India  
Seva Foundation  
Mission for Vision  
Operation Eyesight Universal  
Save the Children, India  
KFB, Austria  
UNICEF, Kolkata  
CHILDLINE  
Help Age India  
Terre des hommes  
Kolkata Sanved  
Numerous individuals

## URGENT APPEAL

SSDC's governing body members, staffs and volunteers would like to place an appeal before all development concerned individuals, organizations and groups to **extend your kind support** towards the people of Sundarbans region as this region is suffering very badly at present due to the recent **Triple blow of COVID-19 pandemic, super cyclone Amphan and very severe cyclone YAAS**. It is a humble submission to all of them to render benevolent service to the poorest of the poor living in Sundarban region.

In accordance with our integrated developmental efforts, we are also committed to reach more people to escalate the socio-economic & health development in the rural Sundarbans. **Your valuable support** may ensure an enormous change in human life in terms of raising their dignity to a different height forever.

DONATE



**Sundarban Social Development Centre (SSDC)**

Sultanpur, P.O. - Krishnanagar, South 24 Parganas, West Bengal, India, PIN - 743345

email - [ssdc@ssdcindia.org.in](mailto:ssdc@ssdcindia.org.in)

Website - [www.ssdcindia.org.in](http://www.ssdcindia.org.in)

Contact No.- 9433280774 / 9831654218